

BOSTON TERRIER CLUB OF WESTERN WASHINGTON



March 26-28, 2021
ARGUS RANCH
35612 212th Way SE, Auburn, WA 98092

Judges:

LORI HOLDREN

Friday: T2B, All Standard, Premier Standard
Saturday: All FAST, All JWW, Premier JWW
Sunday: T2B, All Standard, Premier Standard

DAVE SLIGER

All FAST, All JWW, Premier JWW
T2B, All Standard, Premier Standard
All FAST, All JWW, Premier JWW

PLEASE READ AND FOLLOW THE AGILITY TRIAL SAFETY PROCEDURES

You can find them here:

<https://k-9sports.com/wp-content/uploads/2021/02/K-9-Sports-Agility-Trial-Safety-Procedures-for-COVID-Argus-Ranch.pdf>

Running Order and Class Information

Please check all your trial information carefully on the confirmation you were sent and notify me immediately in writing with any corrections. You can contact me via email at k9sports22@gmail.com or by phone (503) 840-4303 (cell).

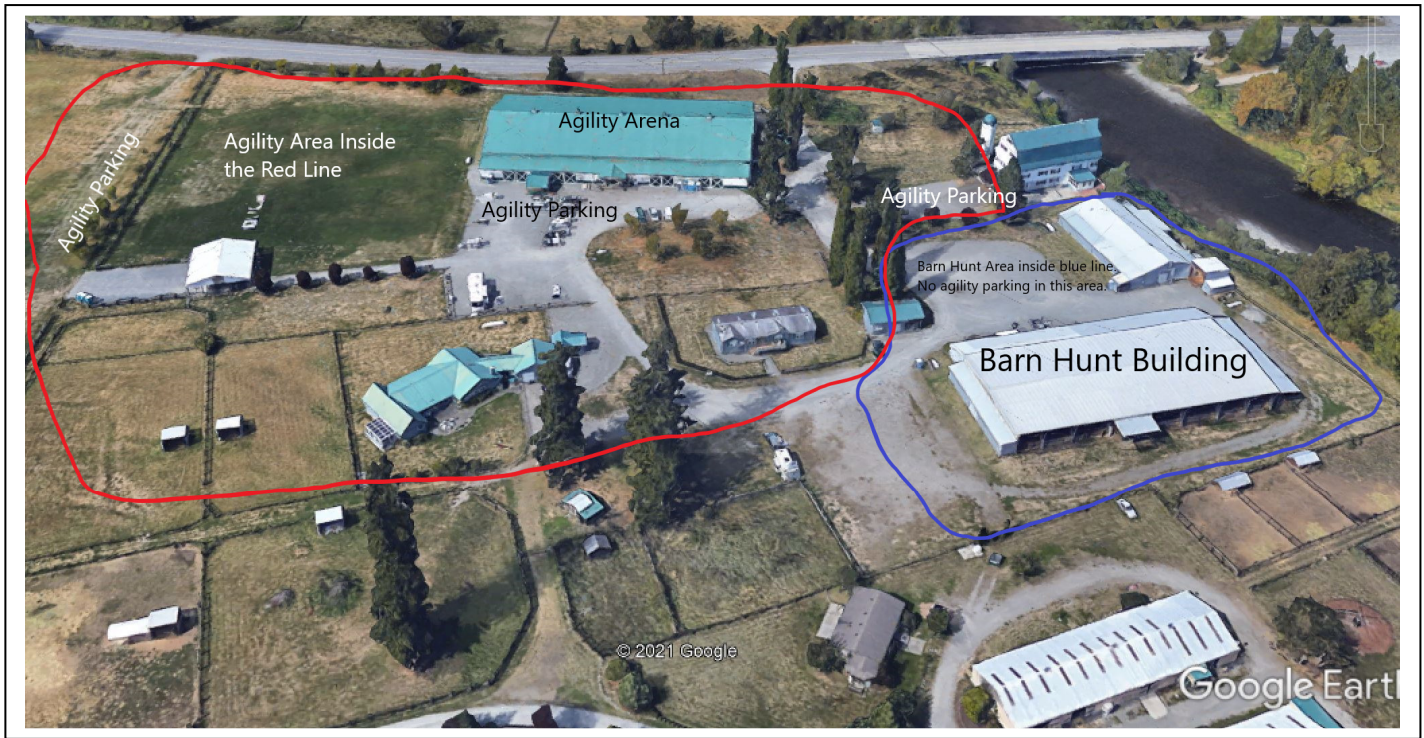
AGILITY GATE APP: We will be using the fabulous Agility Gate App at this trial (created by Roger Ly – rogerly@gmail.com). **The access code is 4303.** If you don't already have the app on your device, you can go to your Play Store and download the Agility Gate App for free. We have some ideas we're going to try to hopefully get good wifi service so we will at least have TV monitors outside the building for you to walk up and check if you can't get service on your phones.

~ IMPORTANT PARKING REVISION FOR THIS TRIAL ~

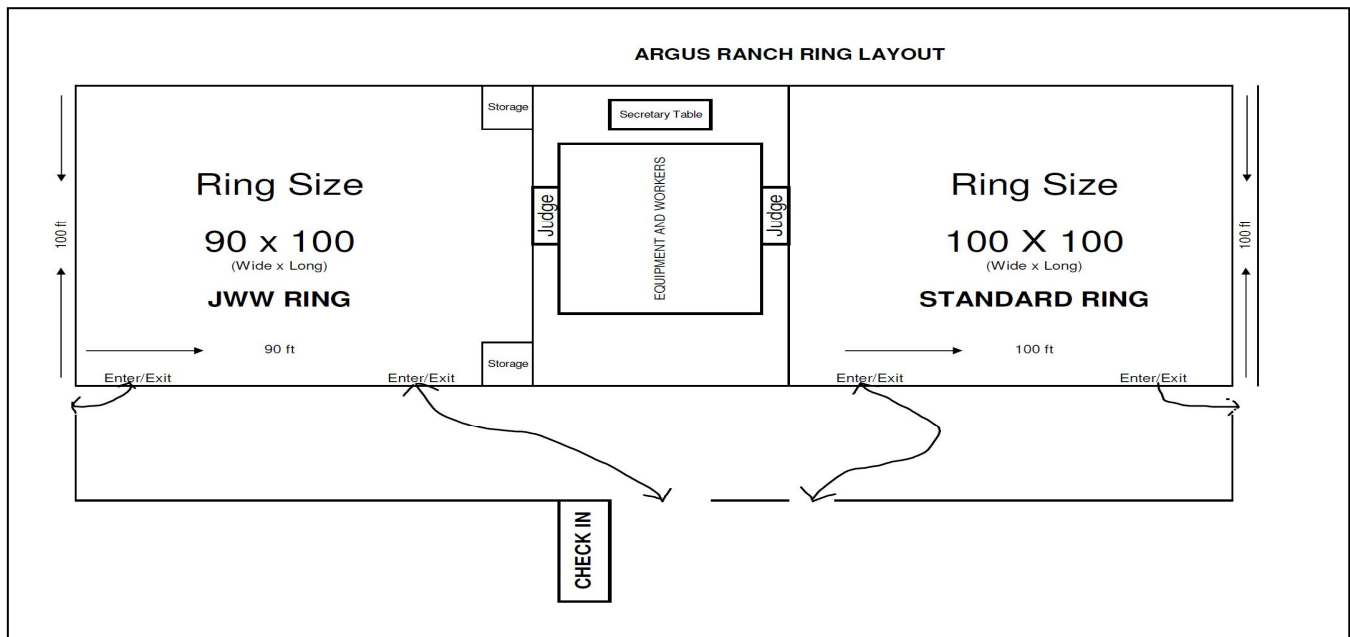
In addition to our agility trial this weekend, there is also a Barn Hunt event being held in the Zaney Arena. Please look closely at the photo of the Argus Facility on the next page for a visual of the parking areas. Barn Hunt exhibitors will have the middle parking area in front of the Zaney Arena and next to the Training Barn. They will also be parking their people around the Zaney Arena building. **NO AGILITY PARKING IN THOSE AREAS.**

Agility parking allowed in the parking lot in front of the Agility Arena building. Agility parking also allowed in front of Brutus Hall. Overflow agility parking will be out in the big field.

ON THE NEXT PAGE IS A PHOTO WITH DETAILS ON THE DESIGNATED AREAS FOR AGILITY AND BARN HUNT.



Below is a diagram of the building layout with enter/exit areas marked for flow. At this time we cannot gather in large numbers inside the building. You can have someone come in the building to video your run or help during your run.



SITE INFO: This trial will be held in two rings indoors on packed dirt. **Due to COVID restrictions, inside crating will not be allowed. We will be limited to 50 people at any one time in the building. So, when you're not running we ask that you limit your time in the building.**

CHECK IN: You must check in at the designated table. You will have your temp taken and then you'll receive an armband. You must have the armband to enter the arena building.

Also attached to the email is a COVID waiver that must be signed by all exhibitors. You can print it out, sign and bring it to the trial with you to present at check-in.

Directions to Argus Ranch (35612 212th Way SE, Auburn, WA 98028):

From the North/South I-5 or SR 167: Exit at Hwy 18 East, take exit for Auburn-Black Diamond Road East, keep right. Turn right at SE Green Valley Rd. (just past Neely Mansion). Turn right onto 212th Way SE. Then turn left into Argus Ranch driveway. Follow signs for parking.

From SR-169 Southbound: Turn right onto Roberts Dr. (in front of coal car). Follow Roberts Dr. approx 4 miles. Turn left at 218th St., Bottom of the hill is a stop sign. Go straight across over the cement bridge and take the first left into Argus Ranch driveway.

From SR-169 Northbound: Turn left at SE Green Valley Rd. Follow Green Valley Rd., approx 4 miles. Turn left at 212th Way SE, then take the first left into Argus Ranch driveway.

**PLEASE READ AND FOLLOW THE AGILITY TRIAL SAFETY PROCEDURES
THESE WERE ALSO ATTACHED TO THE EMAIL WITH THIS LETTER**

PRELIMINARY RUNNING ORDER: The Preliminary Running Order is contingent on move-up entries not yet received.

Friday ~ Small to Tall	Ring 1 ~ Lori Holdren Start 10:00am	Ring 2 ~ Dave Sliger Start 10:30am
START TIME 10:00 AM	T2B Premier Standard Exc/Master Standard Open Standard Novice Standard	All FAST will run together by jump height Novice JWW Open JWW Exc/Master JWW Premier JWW
Excellent Standard and JWW Walk Thru	Exc Standard Walk/Run each group 4/8, 12,16, 20, 24/24C	Exc JWW Walk/Run each group 4/8, 12,16, 20, 24/24C 4

Saturday ~ Tall to Small	Ring 1 ~ Dave Sliger Start 9:00am	Ring 2 ~ Lori Holdren Start 9:30am
START TIME 9:00 AM	T2B Premier Standard Exc/Master Standard Open Standard Novice Standard	All FAST will run together by jump height Novice JWW Open JWW Exc/Master JWW Premier JWW
Excellent Standard and JWW Walk Thru	Exc Standard Walk/Run each group 24C/24/, 20, 16, 12, 8/4	Exc JWW Walk/Run each group 24C/24/, 20, 16, 12, 8/4

Sunday ~ Small to Tall	Ring 1 ~ Lori Holdren Start 9:00am	Ring 2 ~ Dave Sliger Start 9:30am
START TIME 9:00 AM	T2B Premier Standard Exc/Master Standard Open Standard Novice Standard	All FAST will run together by jump height Novice JWW Open JWW Exc/Master JWW Premier JWW
Excellent Standard and JWW Walk Thru	Exc Standard Walk/Run each group 4/8, 12,16, 20, 24/24C	Exc JWW Walk/Run each group 4/8, 12,16, 20, 24/24C

FAST CLASS WALK THRU We will have an open walk thru for ALL FAST prior to the start time (walk thru will last about 30 minutes – while T2B is running). Keep in mind that per COVID guidelines we need to keep the number of people in the ring to 25 or less at any one time.

Walk through groups may be changed at the trial to accommodate for workers.

MEASURING: All dogs without height cards will have to be measured this weekend. We will have a VMO available at this trial. We will have a VMO available to measure dogs throughout the day on all days. Measuring will take place near the secretary table.

GENERAL: ALL dogs are required to be kept on leash at ALL times. And please pick up after your dogs.

MOVE-UPS: The deadline for move-ups is Monday, March 22, 2021 at 6 pm and must be submitted in writing (email ok). Day-to-Day move-ups will be permitted at these trials and must be submitted to the score table no later than 30 minutes after the end of the trial.

VOLUNTEERS: You, the volunteers, help make our trials a success. In an effort to keep entry fees low for you and yet help the clubs bottom line, we will be offering a **DAILY worker raffle**. The workers raffle will be drawn each day in the early afternoon. Prizes must be claimed by the conclusion of the trial on Sunday.

GENERAL WALK THROUGHS: We will be doing more walk throughs with smaller groups. No more than 25 people per walk through. Walk through sections will be marked on the running orders and copies will be posted in multiple locations around the building. **It is MANDATORY that face masks be worn during walk throughs.**

PREVENTIVE ITEM: We're recommending that all of you take your temperature in the 2 days prior to the trial. If it's elevated, it could be a sign that you're getting sick. If it is elevated, then please stay home. This will help in not spreading the virus. We will also be doing temperature checks at the two entry doors in the center of the arena building before you can enter the building.

CRATING: Due to Social Distancing requirements, we are limited to the number of people allowed in the building at any one time. Therefore will NOT have indoor crating at this trial. **WE HIGHLY RECOMMEND CRATING OUT OF YOUR CARS or SET UP A CANOPY TENT OUTSIDE NEAR THE ARENA BUILDING.**

CONFLICTS: We will do our best to accommodate conflicts. If you have a conflict, Standard Ring takes precedence over FAST and JWW.

FOOD: There is no food vendor on sight. Please plan to bring your own food as per COVID guidelines we will not be able to provide our regular hospitality.

VETERINARIAN: Sumner Vet Hospital, 15215 Main St., Sumner, WA 98390 253-863-2258

HOSPITAL: Auburn Regional Medical Center, Plaza One, 202 N. Division St., Auburn, WA 98001 253-833-7711

VENDOR: Due to COVID Restrictions imposed by Governor Inslee, Vendors are not allowed at this time.

The Run Order, Worker's Schedule, Entry Statistics, Driving Directions and other information may be downloaded as it becomes available at www.k-9sports.com.

ON SITE CELL CONTACT: If you have questions after Thursday, March 25th, you can call me at (503) 840-4303.

See ya @ the Start Line!!!

Lori Sage
Trial Secretary