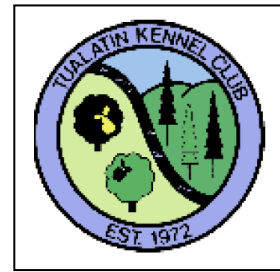


ROSE CITY CLASSIC



DOG FANCIERS ASSOCIATION OF OREGON

TUALATIN KENNEL CLUB



July 29 – Aug 1, 2021

St Paul, OR

St Paul Rodeo Grounds, 20025 4th Street NE, St Paul, OR 97137

Due to low entry numbers we have decided to change to one judge. Tracy Mazur will now be judging all the classes all 4 days. Per AKC Rules, if you wish to cancel your entry due to the judge change, you are entitled to a refund of only those classes affected. That is, you can only get a refund for the classes you entered that would have been judged by Torka Poet.

Judge:

TRACY MAZUR

Thursday: All STD, All JWW, All FAST, T2B

Friday: All STD, All JWW, All FAST, T2B

Saturday: All STD, All JWW, All FAST, T2B

Sunday: All STD, All JWW, All FAST, T2B

Running Order and Class Information

Please check all your trial information carefully on the confirmation you were sent and notify me immediately in writing with any corrections. You can contact me via email at K9sports22@gmail.com or by phone (503) 840-4303 (cell).

SITE INFO: This trial will be held in two rings outdoors on packed dirt. You are allowed to set up canopy tents around the rings. First come, first served on space, however, **DO NOT SET UP ON THE NORTH SIDE OF THE ARENA.**

DIRECTIONS TO THE TRIAL SITE:

From the North

Follow I-5 S to exit 278 from I-5 S

Turn right onto Ehlen Rd NE. Take McKay Rd NE, Champoeg-Salem Rd NE/French Prairie Rd NE and OR-219 N to 4th St NE in Saint Paul

13 min (9.4 mi)

St Paul Rodeo 20029 Main Street NE St Paul, OR 97137

From the South

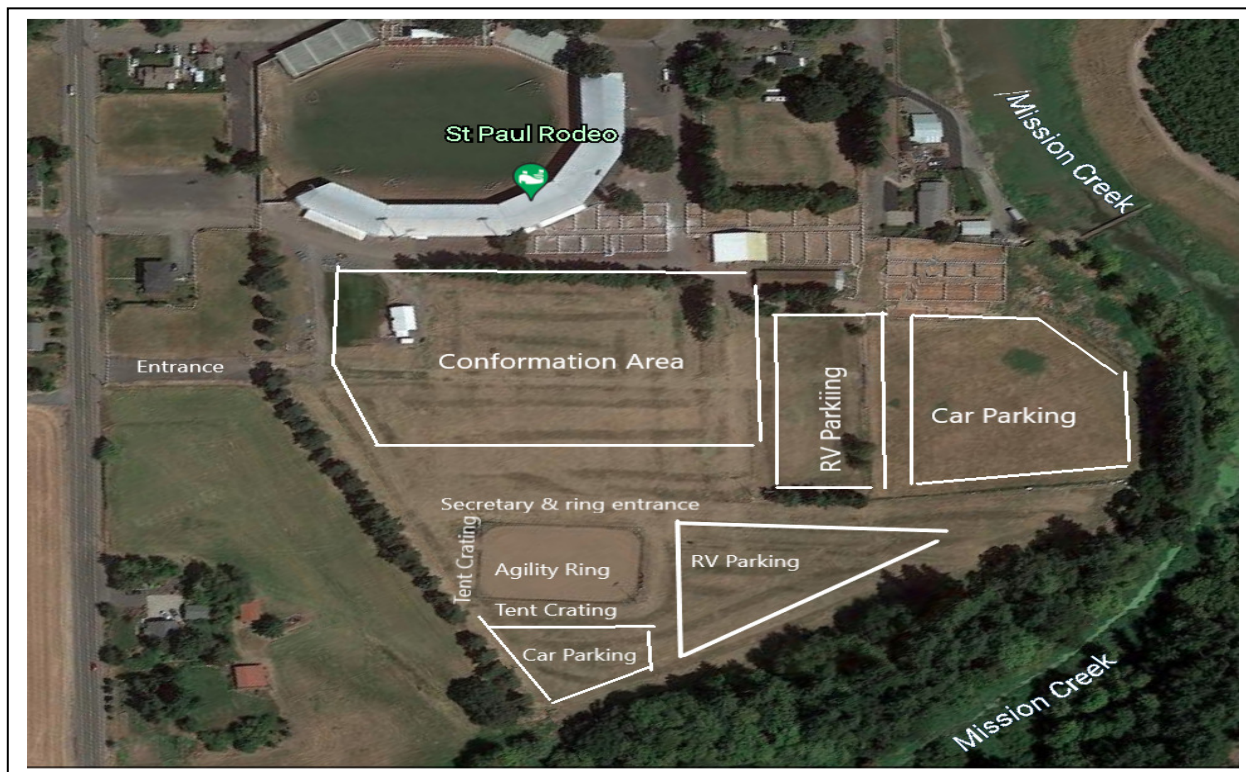
Follow I-5 N to Brooklake Rd NE in Marion County. Take exit 263 from I-5 N

Follow River Rd NE to 4th St NE in Saint Paul

17 min (13.3 mi)

St Paul Rodeo 20029 Main Street NE, St Paul, OR 97137

BELOW IS A PHOTO WITH DETAILS AND LOCATION OF AGILITY AND CONFORMATION AREAS AND DESIGNATED PARKING SPACES.



DAY PARKING

Day Parking must enter and pay at the Main Street entrance. Day parking fee is \$5 per day. Loading and unloading has a 20 minute maximum with flashers on during that time. Follow directions and Parking Crew instructions to available parking spaces. Park in the marked automobile parking spaces ONLY. To unload near Reserved Grooming spaces follow Parking Crew directions and then proceed to designated automobile parking spaces as directed by the Crew.

Purina is pleased to be the official sponsor.



PRELIMINARY RUNNING ORDER: The Preliminary Running Order is contingent on move-up entries not yet received.

Because of the judge change, we have also changed the order of the classes in order to have a more efficient day for all exhibitors.

Thursday ~ Small to Tall	Ring 1 ~ Tracy Mazur Start 8:00am (Alternating Rings)	Ring 2 ~ Tracy Mazur
START TIME 8:00 AM	All FAST will run together by jump height Premier Standard Exc/Master Standard Open Standard Novice Standard	T2B Premier JWW Exc/Master JWW Open JWW Novice JWW
Exc/Mas STD and JWW Walk Thru	Exc Standard Walk/Run each group 4/8/12,16, 20/24/24C	Exc JWW Walk/Run each group 4/8/12,16, 20/24/24C

Friday ~ Tall to Small	Ring 1 ~ Tracy Mazur Start 8:00am (Alternating Rings)	Ring 2 ~ Tracy Mazur
START TIME 8:00 AM	T2B Premier Standard Exc/Master Standard Open Standard Novice Standard	All FAST will run together by jump height Premier JWW Exc/Master JWW Open JWW Novice JWW
Excellent Standard and JWW Walk Thru	Exc Standard Walk/Run each group 24C/24/20, 16, 12/8/4	Exc JWW Walk/Run each group 24C/24/20, 16, 12/8/4

Saturday ~ Small to Tall	Ring 1 ~ Tracy Mazur Start 8:00am (Alternating Rings)	Ring 2 ~ Tracy Mazur
START TIME 8:00 AM	T2B Premier Standard Exc/Master Standard Open Standard Novice Standard	All FAST will run together by jump height Premier JWW Exc/Master JWW Open JWW Novice JWW
Excellent Standard and JWW Walk Thru	Exc Standard Walk/Run each group 4/8/12,16, 20/24/24C	Exc JWW Walk/Run each group 4/8/12,16, 20/24/24C

Sunday ~ Tall to Small	Ring 1 ~ Tracy Mazur Start 8:00am (Alternating Rings)	Ring 2 ~ Tracy Mazur
START TIME 8:00 AM	T2B Premier Standard Exc/Master Standard Open Standard Novice Standard	All FAST will run together by jump height Premier JWW Exc/Master JWW Open JWW Novice JWW
Excellent Standard and JWW Walk Thru	Exc Standard Walk/Run each group 24C/24/20, 16, 12/8/4	Exc JWW Walk/Run each group 24C/24/20, 16, 12/8/4

FAST CLASS WALK THRU We will have an open walk thru for ALL FAST prior to the start time (walk thru will last while T2B is running).

Walk through groups may be changed at the trial to accommodate for workers.

AGILITY GATE APP: We will be using the Agility Gate App at this trial. **The access code is 4303**

MEASURING: All dogs without height cards will have to be measured this weekend. We will have a VMO available at this trial. We will have a VMO available to measure dogs throughout the day on all days. Measuring will take place near the secretary table.

GENERAL: ALL dogs are required to be kept on leash at ALL times. And please pick up after your dogs.

MOVE-UPS: The deadline for move-ups is Monday, July 26, 2021 at 6 pm and must be submitted in writing (email ok). Day-to-Day move-ups will be permitted at these trials and must be submitted to the score table no later than 30 minutes after the end of the trial.

VOLUNTEERS: You, the volunteers, help make our trials a success. In an effort to keep entry fees low for you and yet help the clubs bottom line, we will be offering a **DAILY worker raffle**. The workers raffle will be drawn each day in the early afternoon. Prizes must be claimed by the conclusion of the trial on Sunday.

GENERAL WALK THROUGHS: We will still be doing more walk throughs with smaller groups. No more than 25 people per walk through. Walk through sections will be marked on the running orders and copies will be emailed to you.

CRATING WILL BE OPEN AT 12PM ON WEDNESDAY, July 28th. DO NOT SET UP ANY CRATING SPACE ON THE NORTH SIDE OF THE ARENA. IF YOU DO WE WILL HAVE TO REMOVE IT TO SET UP FOR SECRETARY AND ENTRANCES. IF YOU SET UP PRIOR TO THIS TIME WE RESERVE THE RIGHT TO MOVE YOUR ITEMS IF THEY CONFLICT WITH SET UP FOR THE TRIAL. COURSE BUILDERS AND SET UP CREW HAVE FIRST CHOICE OF CRATING SPACE

CONFLICTS: If you have a conflict, mark you dog as that in the gate app and we will do our best to accommodate you.

FOOD: There will be 3 food trucks on site, but not really close to the agility rings. They will be located at the grassy area seen in the top left corner of the "Conformation" area. You may want to go early and place orders then you can pick up the food at a pre-arranged time.

COOLING OFF IF IT'S HOT: We'll have a wading pool and hose for you to cool off your dogs

VETERINARIAN: Veterinary Services of Oregon ~ 3884 Mission Rd. NE, St Paul, OR 97137 (503) 633-8387

HOSPITAL: Providence Newberg Hospital ~ 1001 Providence Dr., Newberg, OR 97132 (503) 537-1555

The Run Order, Worker's Schedule, Entry Statistics, Driving Directions and other information may be downloaded as it becomes available at www.k-9sports.com.

ON SITE CELL CONTACT: If you have questions after Wednesday, July 28th, you can call me at (503) 840-4303.

See ya @ the Start Line!!!

Lori Sage
Trial Secretary