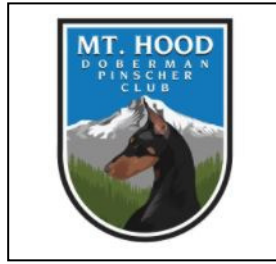


MT HOOD DOBERMAN PINSCHER CLUB



Feb 5-7, 2021
Ridgefield, WA

Clark County Events Center, 17402 NE Delfel Rd., Ridgefield, WA 98642

Judges:

DAN WOLFSON

Friday: T2B, All Standard, Premier Standard
Saturday: All FAST, All JWW, Premier JWW
Sunday: T2B, All Standard, Premier Standard

JIM PRIMMER

All FAST, All JWW, Premier JWW
T2B, All Standard, Premier Standard
All FAST, All JWW, Premier JWW

PLEASE READ AND FOLLOW THE AGILITY TRIAL SAFETY PROCEDURES

You can find them here:

<https://k-9sports.com/wp-content/uploads/2021/01/K-9-Sports-Agility-Trial-Safety-Procedures-for-COVID-Clark-County-Event-Center.-Revised-1-18-21-1.pdf>

Running Order and Class Information

Please check all your trial information carefully on the confirmation you were sent and notify me immediately in writing with any corrections. You can contact me via email at K9sports22@gmail.com or by phone (503) 840-4303 (cell).

~ IMPORTANT PARKING REVISION FOR THIS TRIAL ~

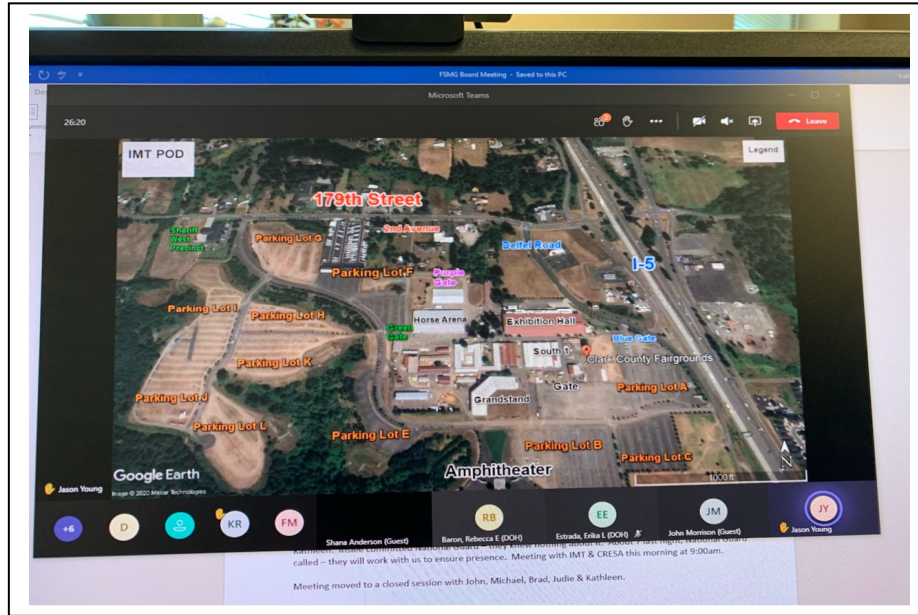
We have received information that Washington State will be conducting COVID vaccinations at Clark County Fairgrounds this week. **They are scheduled from 9am to 5pm Tuesday through Saturday.** So, this will affect our trial on Thursday move in and during the trial on Friday AND Saturday. Because of this please note that those of you that receive indoor crating will be able to set up on Thursday AFTER 5pm. **PLEASE DO NOT ARRIVE PRIOR TO 5PM ON THURSDAY!!!!**

YOU WILL STILL ARRIVE AS NORMAL THROUGH THE PURPLE GATE OFF OF 2ND AVE.

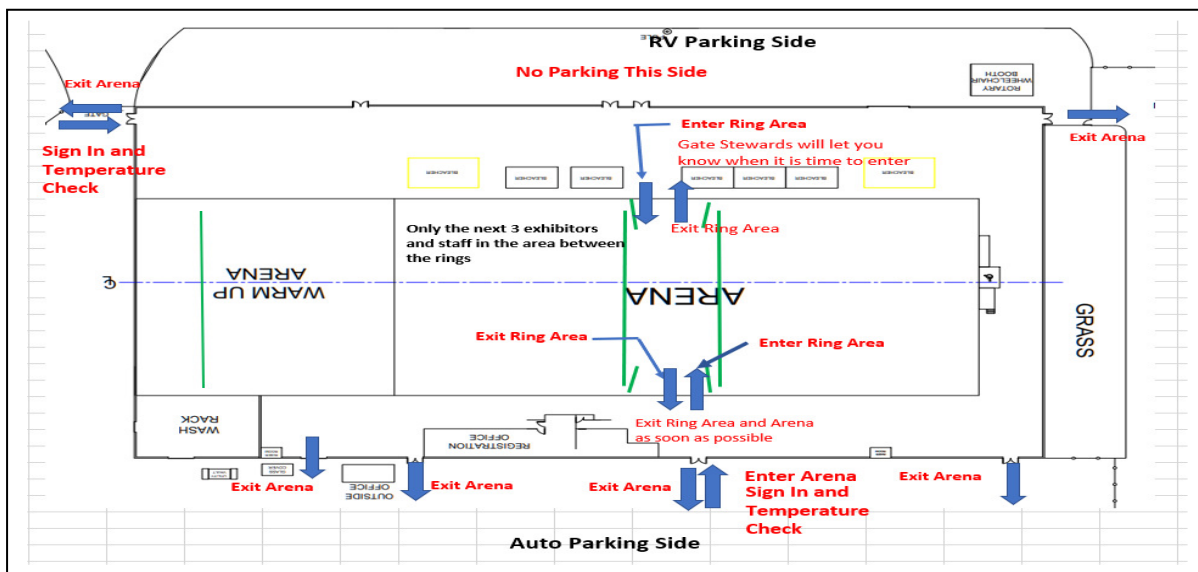
Also, on Friday and Saturday, there will be NO parking on the South side of the building. That is the space where RV's park. This is due to the planned route for those coming in for vaccines. They will be routed through that space. **NO WALKING DOGS ON THE SOUTH SIDE (RV PARKING AREA) OF THE ARENA BUILDING ON FRIDAY AND SATURDAY!!!** We must keep all parking in the triangle area between the arena building and the kids park or between the arena building and the stall building.

This also includes walking of dogs out the Green Walk Through Gate that is West of the arena. **NO WALKING DOGS OUT THAT GATE OR IN THE SPACE WEST OF THE ARENA.** We MUST stay in our designated area on Friday and Saturday. **PLEASE PLEASE PLEASE READ AND FOLLOW ALL THESE INSTRUCTIONS.**

BELOW IS A PHOTO WITH DETAILS ON THE DESIGNATED ROUTE FOR THE VACCINE TRAFFIC FLOW. There will be a guard at the end of 2nd Ave. to direct you in and help the vaccine people find their entrance.



For Friday and Saturday we will move the RV Side Check-In door to the East end of the arena building. The door that exits toward the kids park and where the food vendor used to set up. See diagram below. Sat and Sunday we will have check-in back at the doors on the RV side of the building.



SITE INFO: This trial will be held in two rings indoors on packed dirt. There will be crating available for those that sign up to work. **Due to COVID restrictions**, inside crating space will be limited. We will be drawing names for access to Inside crating from the names of those that signed up to work. You will be notified before the trial if your name was drawn. Please bring chairs, crates, water and clean up tools for your dogs. **We will be limited to 50 people at any one time in the building. So, when you're not running we ask that you limit your time in the building.** Those that were drawn for inside crating will be able to set up after 9am on Friday morning. **If you manage to find a way in and set up prior to that time, we reserve the right to move your space in order to set up the monitor tables, etc.**

FACE COVERINGS MUST BE WORN AT ALL TIMES WHEN IN THE BUILDING, INCLUDING WHEN YOU ARE RUNNING.

DIRECTIONS TO THE TRIAL SITE:

From I-5: Take EXIT 9 (in Washington), head West on 179th Ave. for ½ mile, turn left onto 2nd Ave., then turn left again at Gate 7 (or Purple gate). Exposition and Equestrian Bldg. is on the right, at the end of the road. Feel free to park in any marked parking spot around the arena building. Please do not block any arena entrance or access road.

PLEASE READ AND FOLLOW THE AGILITY TRIAL SAFETY PROCEDURES

THESE WERE ALSO ATTACHED TO THE EMAIL WITH THIS LETTER

PRELIMINARY RUNNING ORDER: The Preliminary Running Order is contingent on move-up entries not yet received.

Friday ~ Tall to Small	Ring 1 ~ Dan Wolfson Start 10:00am	Ring 2 ~ Jim Primmer Start 10:30am
START TIME 10:00 AM	T2B Premier Standard Exc/Master Standard Open Standard Novice Standard	All FAST will run together by jump height Novice JWW Open JWW Exc/Master JWW Premier JWW
Excellent Standard and JWW Walk Thru	Exc Standard Walk/Run each group 24C/24, 20, 16, 12, 8/4	Exc JWW Walk/Run each group 24C/24, 20, 16, 12, 8/4

Saturday ~ Small to Tall	Ring 1 ~ Jim Primmer Start 9:00am	Ring 2 ~ Dan Wolfson Start 9:30am
START TIME 9:00 AM	T2B Premier Standard Exc/Master Standard Open Standard Novice Standard	All FAST will run together by jump height Novice JWW Open JWW Exc/Master JWW Premier JWW
Excellent Standard and JWW Walk Thru	Exc Standard Walk/Run each group 4/8, 12,16, 20, 24/24C	Exc JWW Walk/Run each group 4/8, 12,16, 20, 24/24C

Sunday ~ Tall to Small	Ring 1 ~ Dan Wolfson Start 9:00am	Ring 2 ~ Jim Primmer Start 9:30am
START TIME 9:00 AM	T2B Premier Standard Exc/Master Standard Open Standard Novice Standard	All FAST will run together by jump height Novice JWW Open JWW Exc/Master JWW Premier JWW
Excellent Standard and JWW Walk Thru	Exc Standard Walk/Run each group 24C/24, 20, 16, 12, 8/4	Exc JWW Walk/Run each group 24C/24/, 20, 16, 12, 8/4

FAST CLASS WALK THRU We will have several smaller groups of walk throughs for ALL FAST classes. Each walk through will have no more than 20 people. We will walk ALL FAST exhibitor groups and then we will Run all FAST Classes together by jump height.

Walk through groups may be changed at the trial to accommodate for workers.

MEASURING: All dogs without height cards will have to be measured this weekend. We will have a VMO available at this trial. We will have a VMO available to measure dogs throughout the day on all days. Measuring will take place near the secretary table.

GENERAL: ALL dogs are required to be kept on leash at ALL times. And please pick up after your dogs.

MOVE-UPS: The deadline for move-ups is Monday, Feb 1, 2021 at 6 pm and must be submitted in writing (email ok). Day-to-Day move-ups will be permitted at these trials and must be submitted to the score table no later than 30 minutes after the end of the trial.

VOLUNTEERS: You, the volunteers, help make our trials a success. In an effort to keep entry fees low for you and yet help the clubs bottom line, we will be offering a **DAILY worker raffle**. The workers raffle will be drawn each day in the early afternoon. Prizes must be claimed by the conclusion of the trial on Sunday.

GENERAL WALK THROUGHS: We will be doing more walk throughs with smaller groups. No more than 20 people per walk through. Walk through sections will be marked on the running orders and copies will be posted in multiple locations around the building. **It is MANDATORY that face masks be worn during walk throughs.**

PREVENTIVE ITEM: We're recommending that all of you take your temperature in the 2 days prior to the trial. If it's elevated, it could be a sign that you're getting sick. If it is elevated, then please stay home. This will help in not spreading the virus. We will also be doing temperature checks at the two entry doors in the center of the arena building before you can enter the building.

CRATING: Due to Social Distancing requirements, we are limited to the number of people allowed in the building at any one time. **WE HIGHLY RECOMMEND CRATING OUT OF YOUR CARS.** Indoor spaces will be given to worker's first. In discussing the best and most fair way to handle the indoor crating space, on Tuesday, Feb 2nd at 5 pm, I will do a Facebook Live drawing from the exhibitors that signed up to work, for indoor crating space.

PLEASE REPLY TO THE CONFIRMATION EMAIL IF YOU WISH TO WORK AND BE INCLUDED IN THE FACEBOOK LIVE DRAWING

INDOOR CRATING WILL BE OPEN AT 5PM ON THURSDAY, Feb 4th.

There is also crating available in the horse stall building on the North side of the arena building. You are free to set up crating spaces in there beginning at 4pm on Thursday. Please keep in mind that Social Distancing requirements will still be needed so make sure to leave at least 6 feet between your set ups. See the Covid Procedures also attached to your confirmation email that gives detail for crating etc.

CONFLICTS: We will do our best to accommodate conflicts. If you have a conflict, Standard takes precedence over FAST and JWW.

FOOD: The Rustic Cup will be here to provide coffee, smoothies and other items. She will also have some food items available. But plan on bringing your own lunch if you want more than snack items. Due to the COVID-19 we will not be able to provide hospitality food.

VETERINARIAN: Columbia River Veterinary Specialists, 6607 NE 84th Street, Suite 109, Vancouver, WA 98665 (360) 694-3007 <http://columbiarivervet.com> Directions and maps are available from the trial secretary and will also be posted at the trial site.

HOSPITAL: Southwest Washington Medical Center is located at 3400 Main St., Vancouver, WA 98663 (360) 256-2000, open 24 hours a day. Directions and maps are available from the trial secretary and will also be posted at the trial site.

VENDOR: Due to COVID Restrictions imposed by Governor Inslee, Vendors are not allowed at this time.

PLEASE READ AND FOLLOW THE AGILITY TRIAL SAFETY PROCEDURES. THESE WERE ALSO ATTACHED TO THE EMAIL WITH THIS LETTER

The Run Order, Worker's Schedule, Entry Statistics, Driving Directions and other information may be downloaded as it becomes available at www.k-9sports.com.

ON SITE CELL CONTACT: If you have questions after Thursday, Feb 4th, you can call me at (503) 840-4303.

See ya @ the Start Line!!!

Lori Sage
Trial Secretary