

EX/M SEND:

4, 5, 6 Pinwheel
Begin on any jump in pinwheel in any direction and continue in flow
60 points needed to Q
Bonus 15 + Send 20 = 35
25 More Points Needed

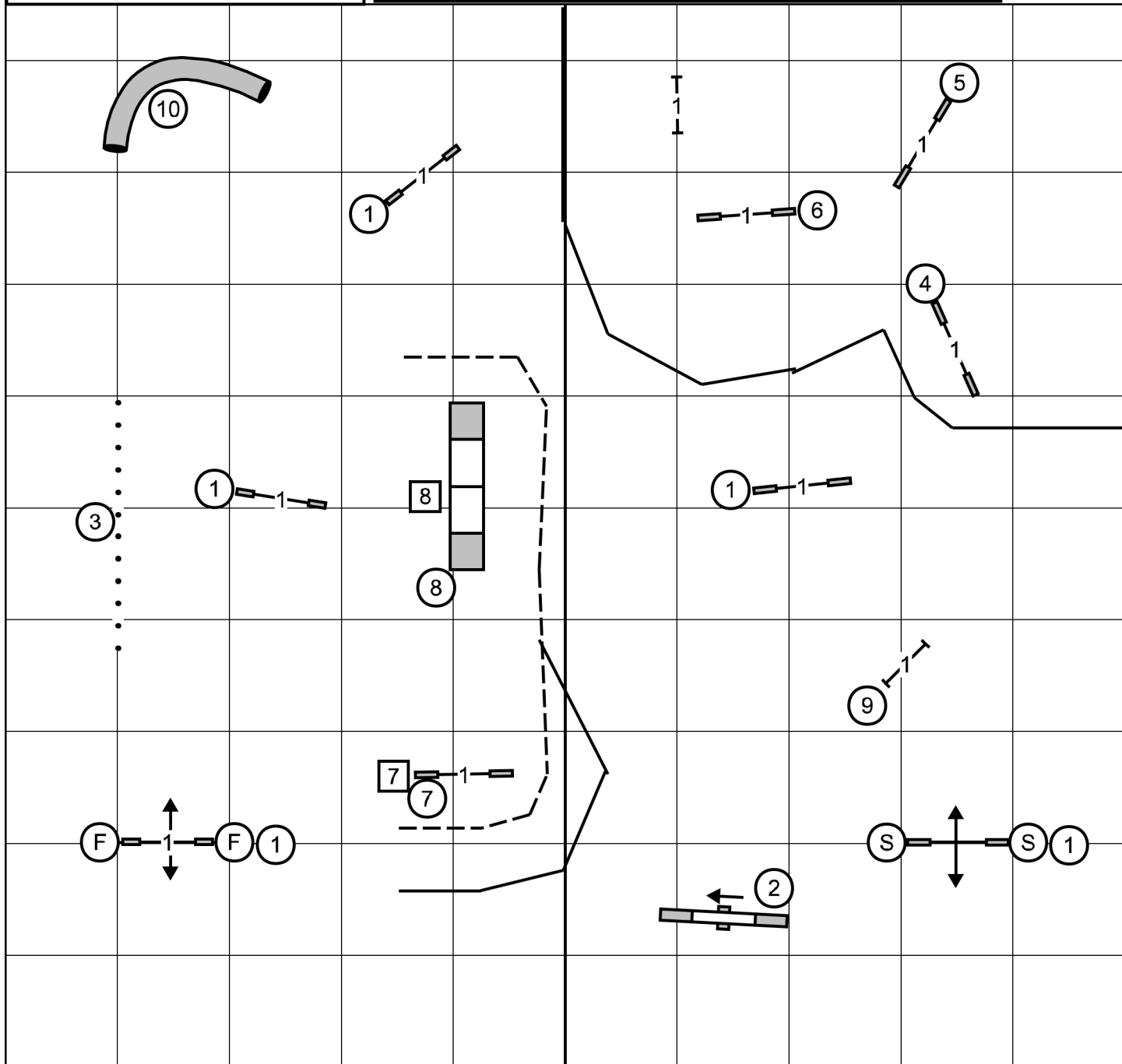
OPEN SEND:

7 to 8 (solid line)
55 points needed to Q
Bonus 15 + Send 20 = 35
20 More Points Needed

NOVICE SEND:

7 to 8 (dashed line)
50 points needed to Q
Bonus 15 + Send 20 = 35
15 More Points Needed

Ex/M may take Squares 7 and/or 8 in any direction for points



Gate

Emerald Dog Obedience Club
Eugene, OR

ALL F.A.S.T.

Saturday, August 27, 2022
Judge: Michael Case

Gate

4" Pref = 41 sec
8" Reg/8" & 12" Pref = 38 sec
12" & 16" Reg/16" & 20" Pref = 35 sec
20", 24", & 24C" Reg = 32 sec