

# COLUMBIA RIVER AGILITY CLUB



**June 7-9, 2024**

**Ridgefield, WA**

**Clark County Events Center, 17402 NE Delfel Rd., Ridgefield, WA 98642**

## Judges:

### **TORKA POET**

Friday: T2B, All Standard, Premier Standard

Saturday: All FAST, All JWW, Premier JWW

Sunday: T2B, All Standard, Premier Standard

### **JIM PRIMMER**

All FAST, All JWW, Premier JWW

T2B, All Standard, Premier Standard

All FAST, All JWW, Premier JWW

## **Running Order and Class Information**

Please check all your trial information carefully on the confirmation you were sent and notify me immediately in writing with any corrections. You can contact me via email at [K9sports22@gmail.com](mailto:K9sports22@gmail.com) or by phone (503) 840-4303 (cell).

**SITE INFO:** This trial will be held in two rings indoors on packed dirt. We will be keeping with some of the other protocol items like only the next 3 dogs and handlers may be in the center area to the rings. **No seating or videoing from that center area will be allowed.** This has proven to be very good for the dogs keeping that area less congested.

**NOTE: DUE TO RECENT THEFTS THE CLARK COUNTY EVENTS CENTER WILL BE LOCKING THE PURPLE GATE AT 7PM EACH NIGHT. IF YOU NEED TO LEAVE AND CAN'T BE BACK BEFORE THE GATE IS LOCKED YOU WILL NEED TO CALL LORI SAGE TO GAIN ACCESS. 503-840-4303**

## **DIRECTIONS TO THE TRIAL SITE:**

*From I-5:* Take EXIT 9 (in Washington), head West on 179<sup>th</sup> Ave. for ½ mile, turn left onto 2<sup>nd</sup> Ave., then turn left again at Gate 7 (or Purple gate). Exposition and Equestrian Bldg. is on the right, at the end of the road. Feel free to park in any marked parking spot around the arena building. Please do not block any arena entrance or access road.

**AGILITY GATE APP:** We will be using the Agility Gate App at this trial. **The access code is 4303**

**MEASURING:** All dogs without height cards will have to be measured this weekend. We will have a VMO available at this trial. We will have a VMO available to measure dogs throughout the day on all days. Measuring will take place near the secretary table.

**PREVENTIVE ITEM:** We're recommending that all of you take your temperature in the 2 days prior to the trial. If it's elevated, it could be a sign that you're getting sick. If it is elevated, then please stay home. This will help in not spreading the virus.

**CONFLICTS:** We will do our best to accommodate conflicts. If you have a conflict, the smaller class will take precedence.

**PRELIMINARY RUNNING ORDER:** The Preliminary Running Order is contingent on move-up entries not yet received.

Friday ~ Tall to Small	Ring 1 ~ Torka Poet Start 10:00am	Ring 2 ~ Jim Primmer Start 10:30am
<b>START TIME 10:00 AM</b>	T2B Premier Standard Exc/Master Standard Open Standard Novice Standard	All FAST will run together by jump height Novice JWW Open JWW Premier JWW Exc/Master JWW
Excellent Standard and JWW Walk Thru	Exc Standard Walk/Run each group 24C/24/20, 16, 12/8/4	Exc JWW Walk/Run each group 24C/24/20, 16, 12/8/4

Saturday ~ Small to Tall	Ring 1 ~ Jim Primmer Start 9:00am	Ring 2 ~ Torka Poet Start 9:30am
<b>START TIME 9:00 AM</b>	T2B Premier Standard Exc/Master Standard Open Standard Novice Standard	All FAST will run together by jump height Novice JWW Open JWW Exc/Master JWW Premier JWW ISC Standard ISC JWW
Excellent Standard and JWW Walk Thru	Exc Standard Walk/Run each group 4/8/12,16, 20/24/24C	Exc JWW Walk/Run each group 4/8/12,16, 20/24/24C

Sunday ~ Tall to Small	Ring 1 ~ Torka Poet Start 9:00am	Ring 2 ~ Jim Primmer Start 9:30am
<b>START TIME 9:00 AM</b>	T2B Premier Standard Exc/Master Standard Open Standard Novice Standard	All FAST will run together by jump height Novice JWW Open JWW Premier JWW Exc/Master JWW
Excellent Standard and JWW Walk Thru	Exc Standard Walk/Run each group 24C/24/20, 16, 12/8/4	Exc JWW Walk/Run each group 24C/24/20, 16, 12/8/4

**FAST CLASS WALK THRU** We will have an open walk thru for ALL FAST prior to the start time (walk thru will last about 30 minutes – while T2B is running).

**Walk through groups may be changed at the trial to accommodate for workers.**

**GENERAL:** ALL dogs are required to be kept on leash at ALL times. And please pick up after your dogs.

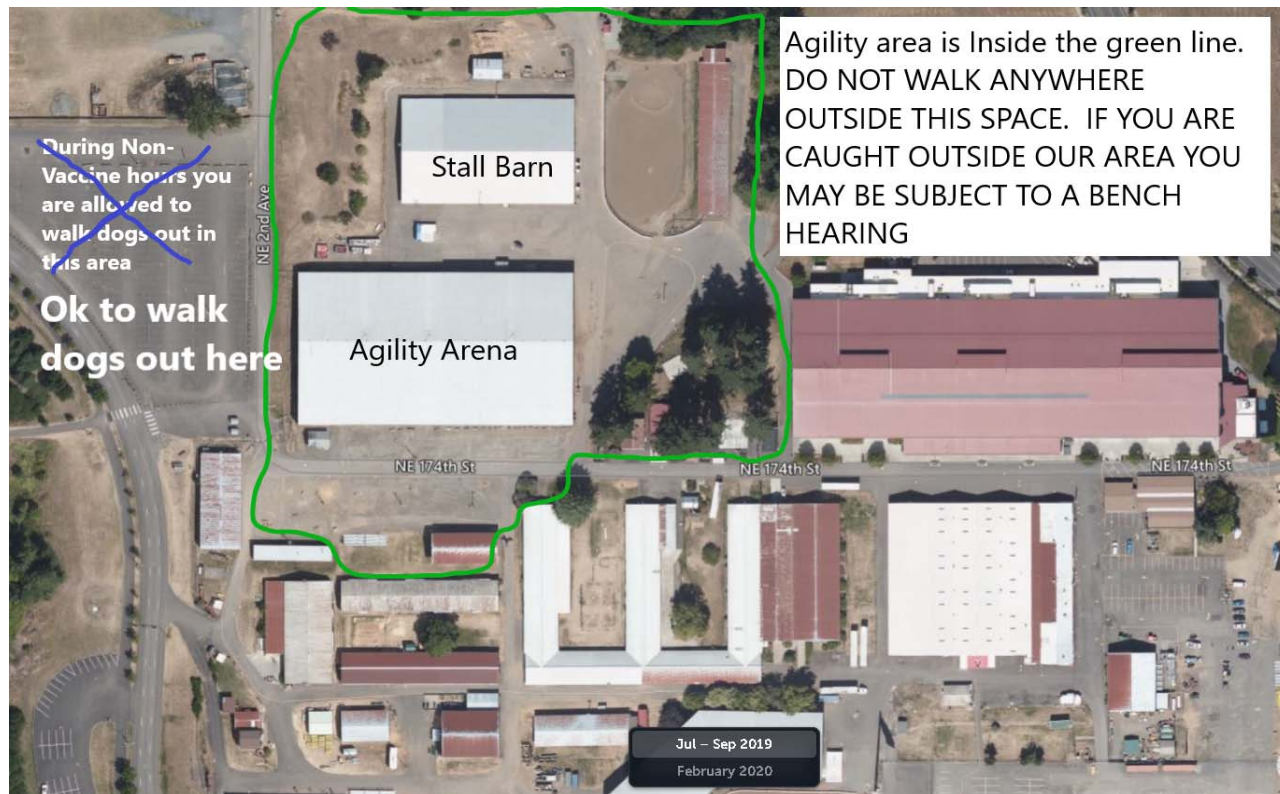
**MOVE-UPS:** The deadline for pre-trial move-ups is Monday, June 3, 2024 at 6 pm and must be submitted in writing (email ok). Day-to-Day move-ups will be permitted at these trials and must be submitted to the score table no later than 30 minutes after the end of the trial.

**VOLUNTEERS:** You, the volunteers, help make our trials a success. In an effort to keep entry fees low for you and yet help the clubs bottom line, we will be offering a **DAILY worker raffle**. The workers raffle will be drawn each day in the early afternoon. Prizes must be claimed by the conclusion of the trial on Sunday. Lunch will also be available for those that work.

**GENERAL WALK THROUGHS:** Walk through sections will be marked on the running orders and that will be emailed to all exhibitors after the move up date.

**FOOD:** We will NOT have a food vendor available at this trial. Please plan accordingly. We will provide light snacks.

**BELOW IS A PHOTO WITH DETAILS ON THE DESIGNATED AREA FOR OUR AGILITY EVENTS.** PARTICIPANTS ARE ALLOWED TO WALK DOGS INSIDE THE AREA MARKED WITH THE GREEN LINE. Failure to stay within our designated area may result in a Bench Hearing. **YOU ARE PERMITTED TO WALK OUT IN THE FIELD TO THE WEST.**



**CRATING:** Crating is on a first come/first served basis.

**INDOOR CRATING WILL BE OPEN AT 4PM ON THURSDAY, IF YOU SET UP PRIOR TO THIS TIME WE RESERVE THE RIGHT TO MOVE YOUR ITEMS IF THEY CONFLICT WITH SET UP FOR THE TRIAL. COURSE BUILDERS AND SET UP CREW HAVE FIRST CHOICE OF CRATING SPACE**

**VETERINARIAN:** Columbia River Veterinary Specialists, 6607 NE 84<sup>th</sup> Street, Suite 109, Vancouver, WA 98665 (360) 694-3007 <http://columbiarivervet.com> Directions and maps are available from the trial secretary and will also be posted at the trial site.

**HOSPITAL:** Southwest Washington Medical Center is located at 3400 Main St., Vancouver, WA 98663 (360) 256-2000, open 24 hours a day. Directions and maps are available from the trial secretary and will also be posted at the trial site.

The Run Order, Worker's Schedule, Entry Statistics, and other information may be downloaded as it becomes available at [www.k-9sports.com](http://www.k-9sports.com).

ON SITE CELL CONTACT: If you have questions you can call me at (503) 840-4303.

See ya @ the Start Line!!!

Lori Sage  
Trial Secretary